

FOUND 2" BRASS DISK IN CONCRETE, 11-14-02

FOUND REBAR/CAP, LS NO. 8992, 11-11-02

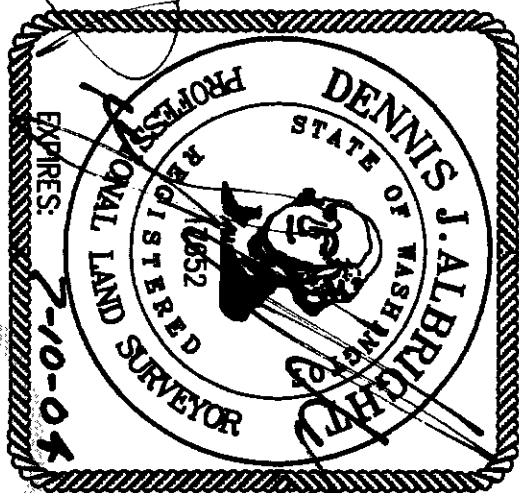
HIGHWAY 20



Scale 1" = 60'

FOUND REBAR/CAP, LS NO. 19645, 11-11-02

CURVE	LENGTH	RADIUS	DELTA
C1	63.69	100.00	36.29222°
C2	55.57	52.00	67.1354°
C3	66.42	52.00	73.71027°
C4	19.36	25.00	44.2456°
C5	81.22	150.00	36.0103°
C6	75.15	118.00	36.2922°
C7	56.04	88.00	36.2922°
C8	40.12	25.00	97.5625°
C9	1.07	150.00	0.26149°
C10	31.02	20.00	88.52109°
C11	7.95	5.00	97.0751°



BASIS OF BEARING

N 72°43'07" E BETWEEN THE FOUND NW CORNER OF LOT 3 AND THE NE CORNER OF LOT 2 OF SKAGIT COUNTY SHORT PLAT 95-020 RECORDED UNDER AUDIORS FILE NO. 9605150078.

VERTICAL DATUM

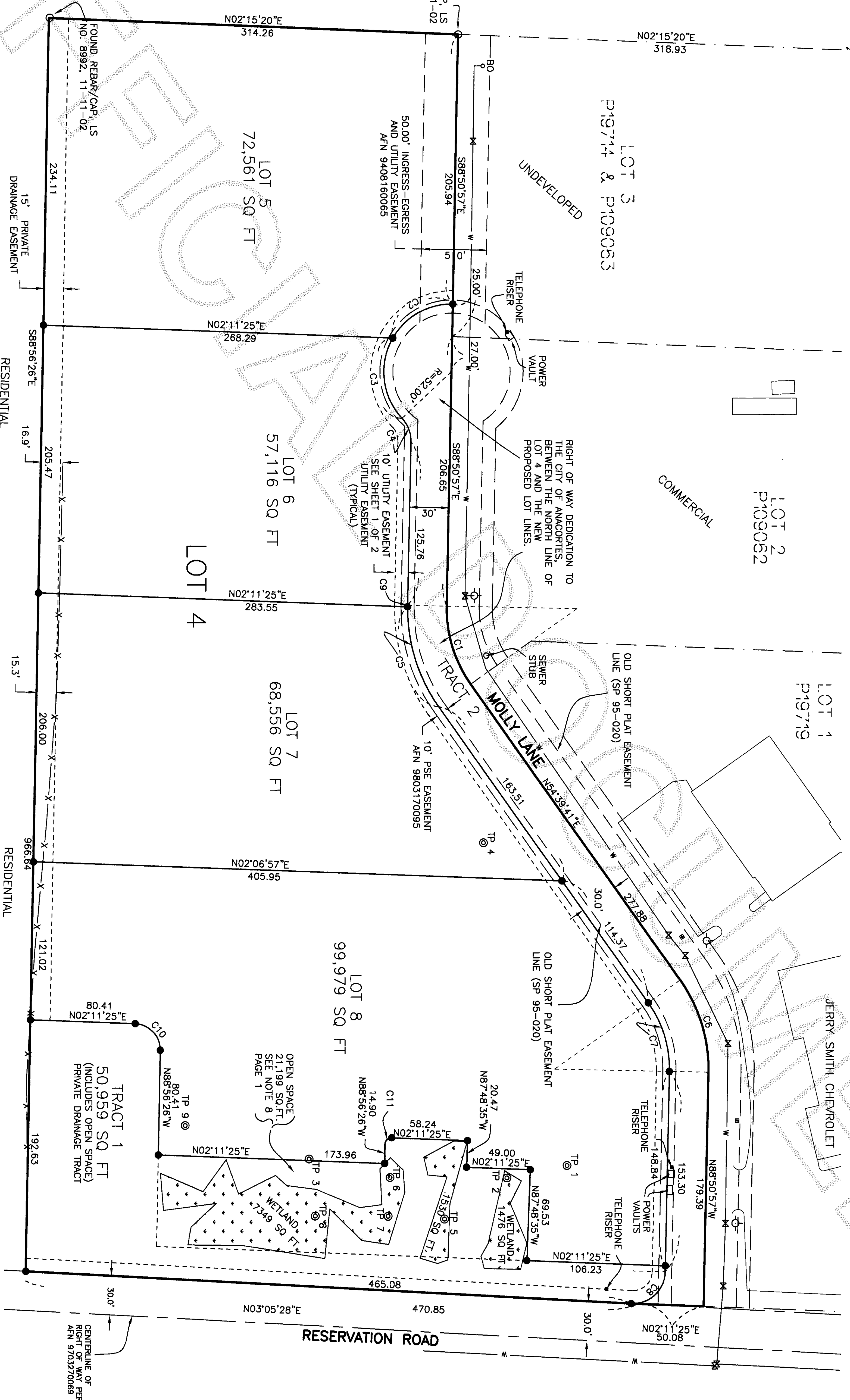
BASED ON SKAGIT COUNTY TBM 7 FROM COUNTY FIELD NOTES DATED 7-7-78, CHISELED "X" ON TOP OF LIGHT STANDARD IN FRONT OF JERRY SMITH CHEVROLET ALONG RESERVATION ROAD. SHOWN CONTOURS ARE FROM AERIAL MAPPING PROVIDED BY THE CITY OF ANACORTES.

WETLAND DELINEATION

WETLAND DELINEATION BY NORTHWEST WETLAND SOLUTIONS IN NOVEMBER, 2002.

RESEARCH

SKAGIT COUNTY SHORT PLAT 95-020, AFR 9605130078 AND SURVEYS RECORDED UNDER AFR'S 9502160018, 9301150077 AND 9902110074.



PARCEL AREAS

LOT	AREA
LOT 5	72,561 SQ FT
LOT 6	57,116 SQ FT
LOT 7	68,556 SQ FT
LOT 8	99,979 SQ FT
TRACT 1	50,959 SQ FT (DRAINAGE - OPEN SPACE)
TRACT 2	26,201 SQ FT (ROAD DEDICATION)
TOTAL	375,272 SQ FT

LEGEND

- FOUND CONCRETE MONUMENT
- SET SURVEY MARKER, LS NO. 17652
- RECOVERED SURVEY MARKER AS NOTED
- CATCH BASIN
- FIRE HYDRANT
- EXISTING WATER LINE
- WATER METER
- TEST PIT
- FENCE LINE

LOT 4 STATISTICS

SKAGIT COUNTY PARCEL NO.'S P19736 AND P19740
AREA = 377,115 SQ.FT.
8.66 ACRES

Sound Development Group

ENGINEERING, SURVEYING & LAND DEVELOPMENT SERVICES
160 Cascade Place, Suite 206
Burlington, WA 98223
Tel: 360-404-2010 Fax: 360-404-2008

SHORT PLAT ANA 03-001

IN A PORTION OF THE SW 1/4
SECTION 3, TOWNSHIP 34 NORTH, RANGE 2 EAST, W.M.
SKAGIT COUNTY, STATE OF WASHINGTON
JERRY SMITH SHORT PLAT

DATE: 1-5-03 BY: DUA SCALE: 1" = 60'
PROJECT NO. 111-SDC-02 F.B.