



200208050188
Skagit County Auditor

8/5/2002 Page 1 of 4 3:53PM

Return Address:
Shell Puget Sound Refinery
PO Box 8505
Anacortes, WA 98221-0622

Document Title: WETLAND MITIGATION PLANS
Federal Projects 2001-4-00364
and 2001-4-00661

Reference Number: _____

Grantor(s): additional grantor names on page ____

- 1. Shell Puget Sound Refinery
- 2.

Grantee(s): additional grantee names on page ____

- 1. Public - Information
- 2.

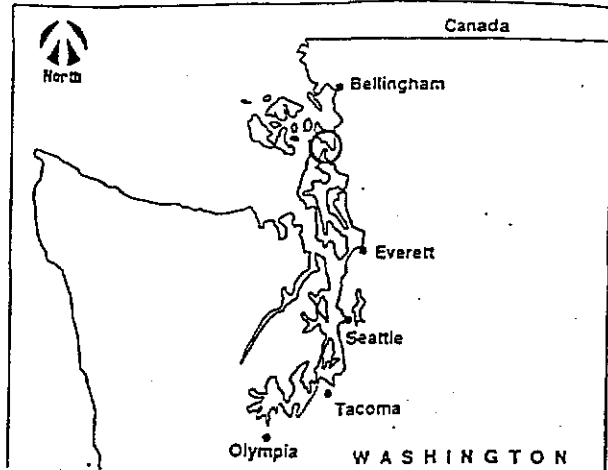
Abbreviated legal description: full legal on page(s) ____

Section 3 & 4 of Township 34 North, Range 2 East and
Sections 33 & 34 of Township 35 North, Range 2 East
in Skagit County, Washington.

Assessor Parcel / Tax ID Number: additional tax parcel number(s) on page ____

350234-0-010-0005

Wetland Mitigation Plans
Federal Projects
2001-4-00364 &
2001-4-00661



Proposed: wetland fill
Purpose: Road widening
App. by Equilon Enterprises, March Point, near Anacortes, Skagit
County, WA.
Reference: 2001-4-00364
& 2001-4-00661
Date 7/5/2001

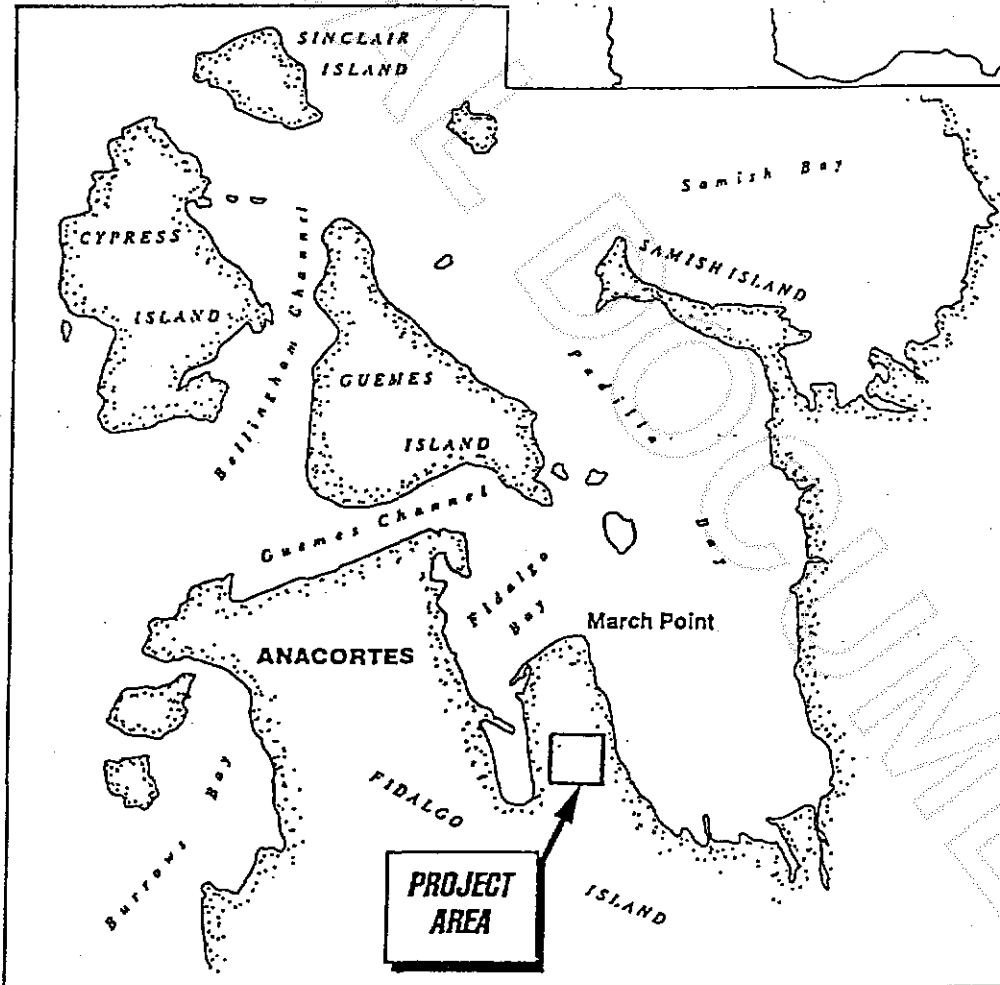
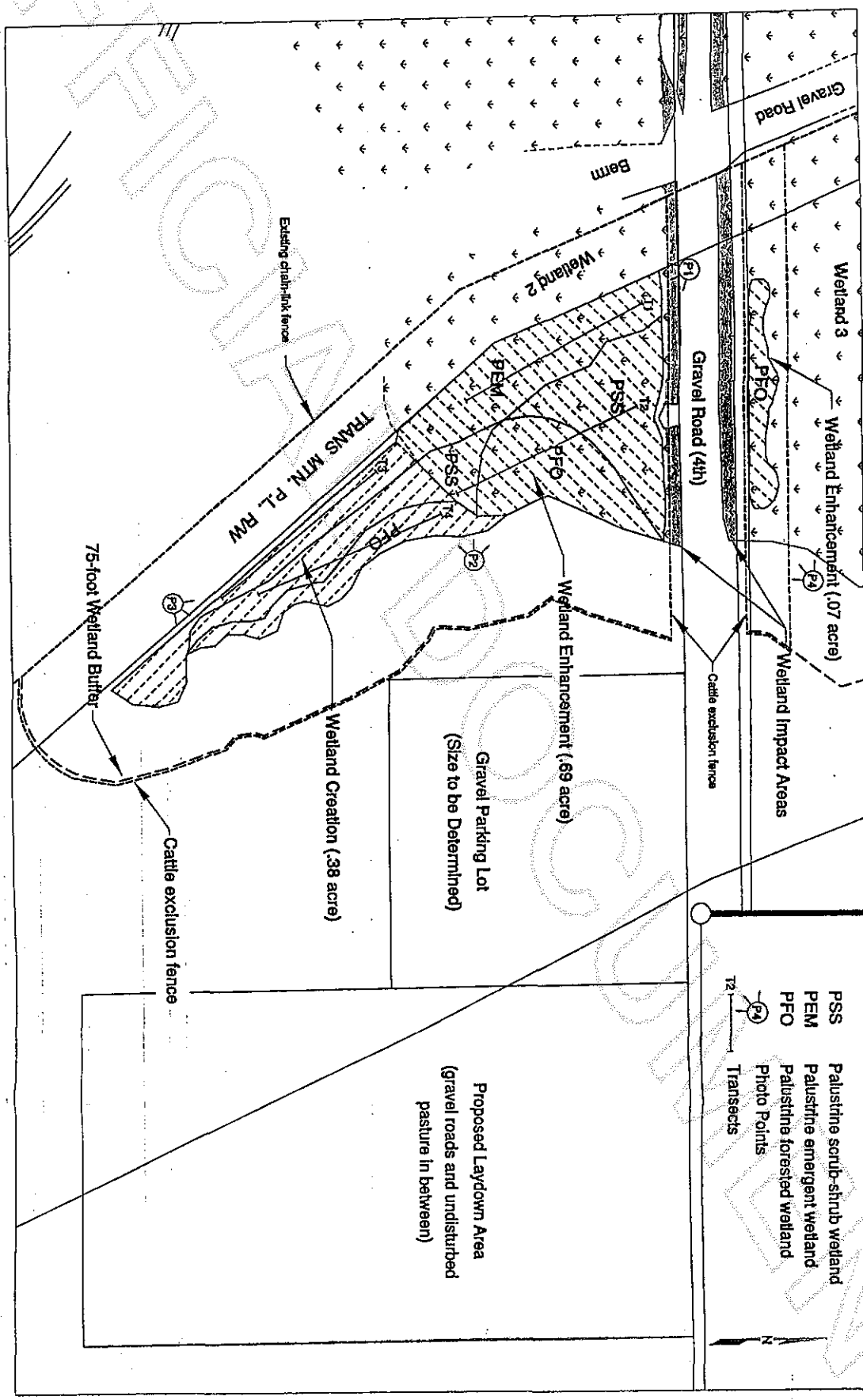


Figure 1. Vicinity map

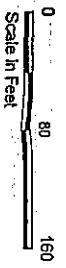




1) Wetland boundaries surveyed with a real-time, differential, connected Trimble Pathfinder Pro X195 global positioning system (GPS)

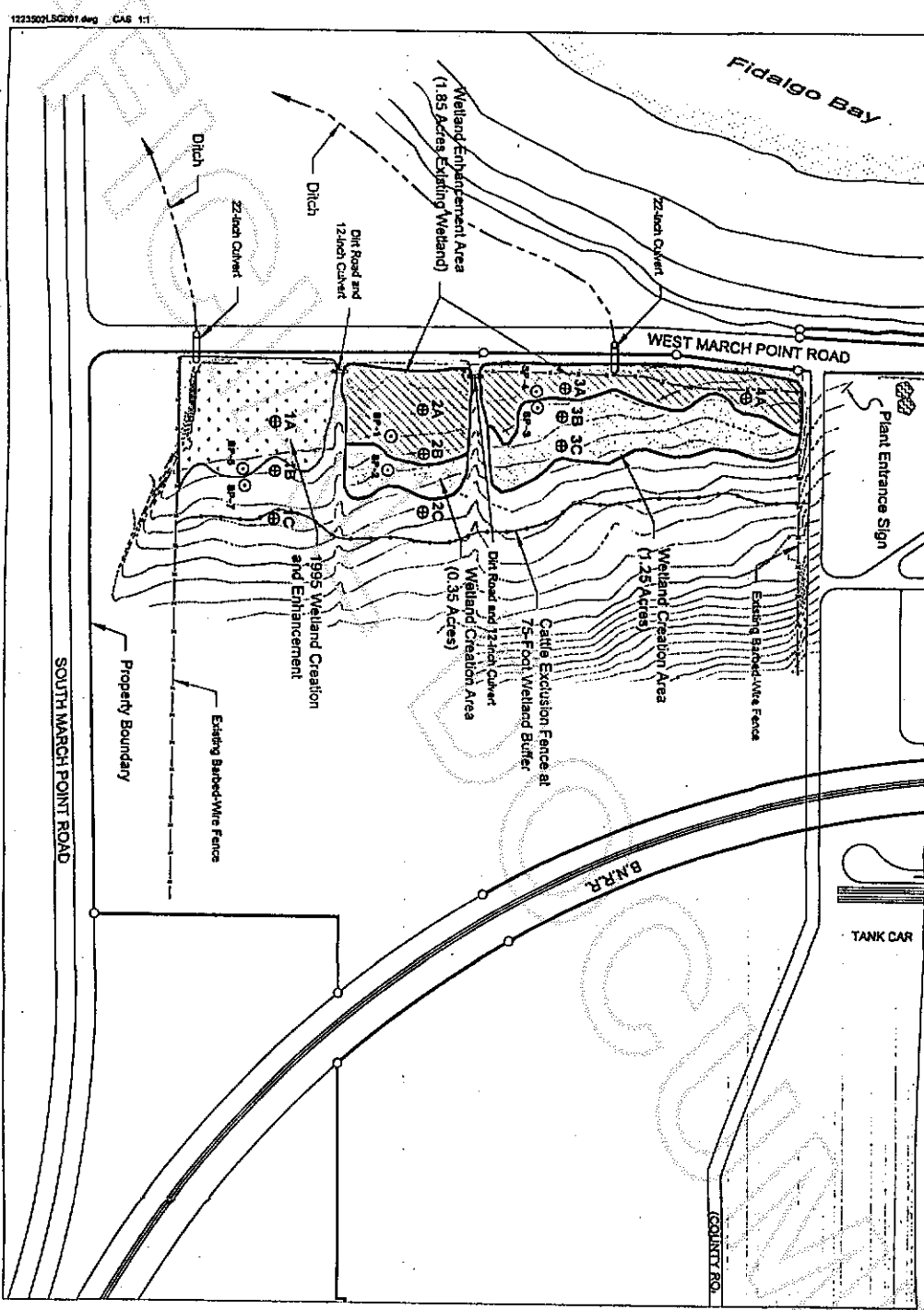
2) GPS wetland data collected in the NAD 83 Washington North State Plane coordinate system. Base map is based on the specific coordinate system. Wetland boundaries were accurately delineated in the field using the GPS. Overlay of wetland boundaries on base map is for presentation purposes only.

3) As-built drawings will be developed following construction.



PEMTEC ENVIRONMENTAL
12235-002





1223502.LSG001.dwg CAS 1:1



- Legend:**
- ▨ Wetland Enhancement Boundary
 - ▭ Wetland Creation Boundary
 - ⊙ sr-7 Sample Plots for Wetland Define
 - ⊙ 1A Soil Salinity Data Plots (Approx. 1

Note:

1. Wetland boundaries surveyed with a real-time, differentially corrected Trimble Pathfinder Pro XRS global positioning system (GPS).
2. GPS wetland data collected in the NAD 27 Washington North State Plane coordinate system. Base map is based on site-specific coordinate system. Existing wetland boundaries were accurately defined in the field using the GPS. Overlay of wetland boundaries on base map is for presentation purposes only.

