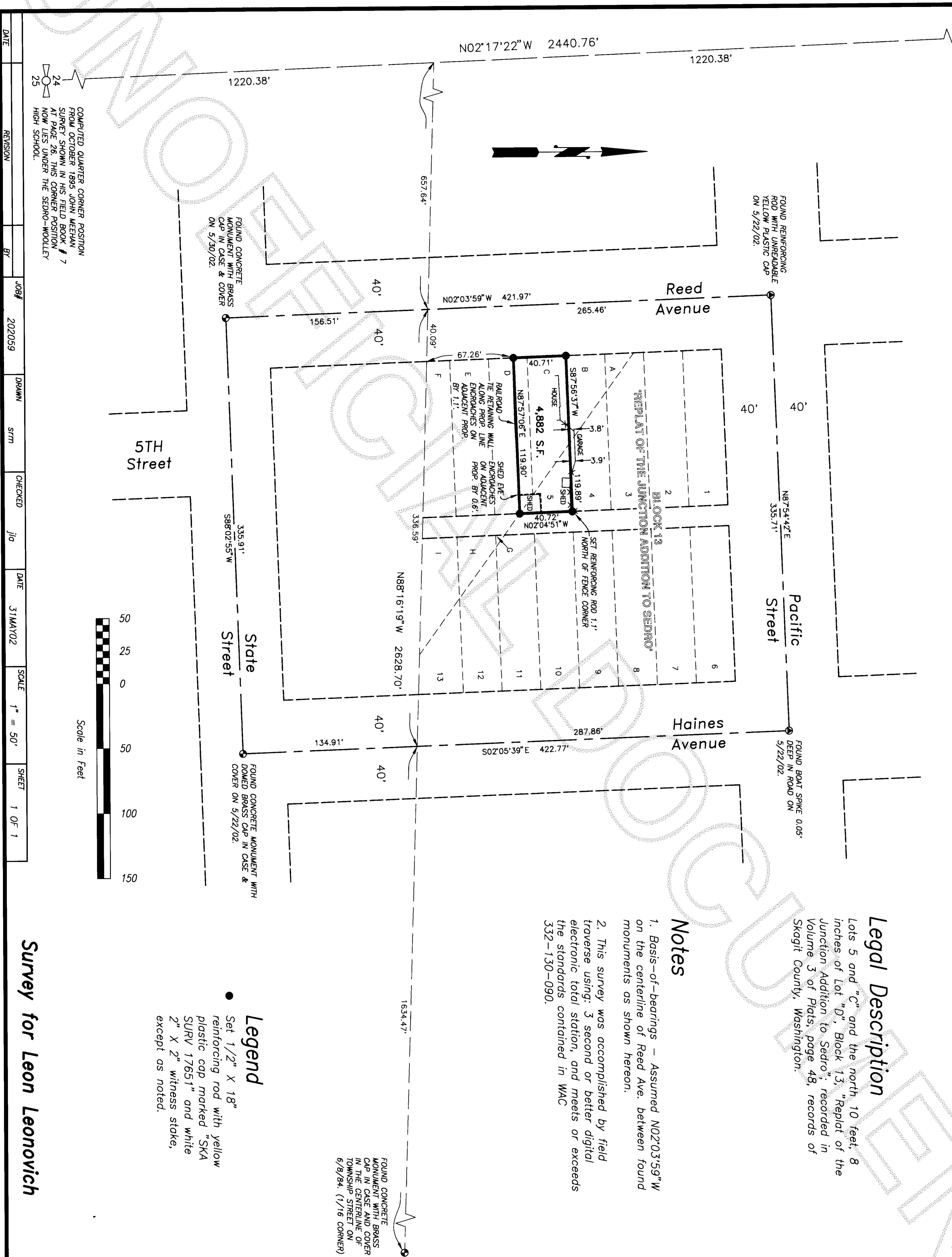


Survey in the NW1/4 of the SE1/4 of Section 24, Twp. 35 N., Rng. 4 E., W.M.

24
COMPUTED CENTER QUARTER CORNER POSITION FROM SURVEY OF ROTKERS' ADDITION TO SEDRO-WOOLLEY FILED IN VOLUME 7 OF PLATS AT PAGE 44.



Legal Description

Lots 5 and "C" and the north 10 feet, 8 inches of Lot "D", Block 13, "Replat of the Junction Addition to Sedro", recorded in Volume 3 of Plats, page 48, records of Skagit County, Washington.

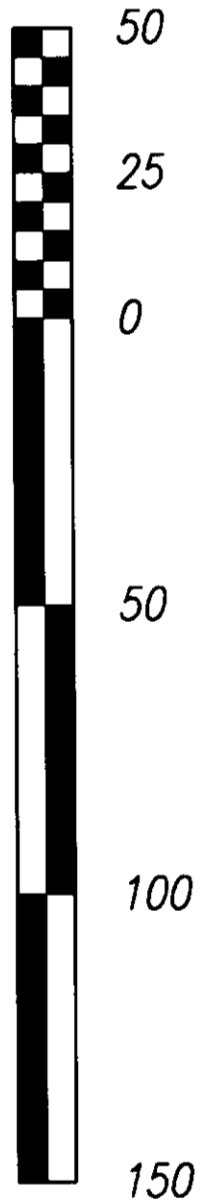
Notes

1. Basis-of-bearings - Assumed N02°03'59"W on the centerline of Reed Ave. between found monuments as shown hereon.
2. This survey was accomplished by field traverse using: 3 second or better digital electronic total station, and meets or exceeds the standards contained in WAC 332-130-090.

- Legend
- Set 1/2" X 18" reinforcing rod with yellow plastic cap marked "SKA SURV 17651" and white 2" X 2" witness stake, except as noted.

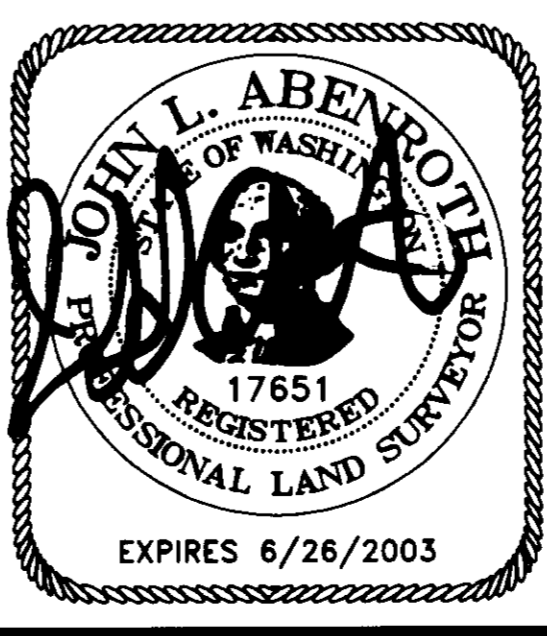
DATE	REVISION	JOB#	DRAWN	CHECKED	DATE	SCALE	SHEET
		202059	STW	JLD	31MAY02	1" = 50'	1 OF 1

COMPUTED QUARTER CORNER POSITION FROM OCTOBER 1893 JOHN MEEHAN SURVEY SHOWN IN HIS FIELD BOOK # 7 AT PAGE 26. THIS CORNER POSITION NOW LIES UNDER THE SEDRO-WOOLLEY HIGH SCHOOL.



Survey for Leon Leonovich

Skagit Surveyors & Engineers
 806 Metcalf St., Sedro-Woolley, WA 98284 Phone: (360) 855-2121 FAX: (360) 855-1658
 COPYRIGHT 2001 SKAGIT SURVEYORS, INC.



SURVEYOR'S CERTIFICATE
 This map correctly represents a survey made by me or under my direction in conformance with the Survey Recording Act in May 2002 at the request of Leon Leonovich.
 John L. Abenroth CERT#17651
 Date 7/9/2002

AUDITOR'S CERTIFICATE
 200207150175
 Skagit County Auditor
 7/15/2002 Page 1 of 1 11:57AM
 Cheryl D. Larin
 County Auditor or Deputy Auditor