

2014 Special Election
Official Ballot
Skagit County, Washington
February 11, 2014

Instructions

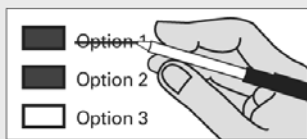
How to vote



Use a dark blue or black ink pen to completely fill in the box to the left of your choice.

Vote for one in each race. If you vote for more than one, no votes will be counted for that race.

If you make a mistake



Draw a line through the entire measure response or candidate's name.

Then you may make another choice.

Who donates to campaigns?
View contributors for candidates and measures

Public Disclosure Commission
www.pdc.wa.gov
Toll Free (877) 601-2828

↓ **Start voting here**

Proposition No. 1
Conway School District No. 317
Replacement Educational Programs & Operations Levy

The Board of Directors of Conway School District adopted Resolution No. 30-2013 concerning educational funding. This proposition authorizes the District to levy the following excess taxes to replace an expiring levy on all taxable property within the District to support the District's educational programs and operations:

Collection Years	Approximate Levy Rate/\$1,000 Assessed Value	Levy Amount
2015	\$3.40	\$1,365,000
2016	\$3.44	\$1,400,000
2017	\$3.48	\$1,435,000
2018	\$3.51	\$1,470,000

Should this proposition be approved?

(Vote for ONE ONLY)

Yes

No

Continue voting next page



Sample Ballot 12000240100009

500063189171

Sample Ballot

1483031158

2014 Special Election
Official Ballot
Skagit County, Washington
February 11, 2014

Proposition No. 2
Conway School District No. 317
Technology Capital Projects Levy

The Board of Directors of Conway School District adopted Resolution No. 31-2013 concerning technology levies. This proposition would authorize the acquisition, installation, and management of computer technology systems, facilities and projects, including enhancing infrastructure, acquiring hardware, licensing software, and implementing online applications and training for the District's technology systems, facilities, or projects; and authorizes the following excess levies for such purposes on all taxable property within the District:

Collection Years	Approximate Levy Rate/\$1,000 Assessed Value	Levy Amount
2015	\$0.15	\$60,000
2016	\$0.15	\$60,000
2017	\$0.15	\$60,000
2018	\$0.14	\$60,000

Should this proposition be approved?

(Vote for ONE ONLY)

- Yes
- No

End of Ballot

Sample Ballot 12000240200016

500063189268

Sample Ballot

1483031158

Instructions

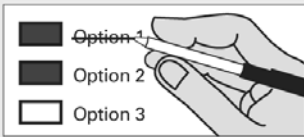
How to vote



Use a dark blue or black ink pen to completely fill in the box to the left of your choice.

Vote for one in each race. If you vote for more than one, no votes will be counted for that race.

If you make a mistake



Draw a line through the entire measure response or candidate's name.

Then you may make another choice.



Who donates to campaigns?

View contributors for candidates and measures

Public Disclosure Commission

www.pdc.wa.gov
Toll Free (877) 601-2828



Start voting here

Proposition No. 1

Darrington School District No. 330

Replacement Maintenance and Operation Levy

The Board of Directors of Darrington School District No. 330 adopted Resolution No. 334-12-13, concerning a proposition to finance maintenance and operation expenses. This proposition would authorize the District to levy the following excess taxes, in place of an expiring levy, upon all taxable property within the District, for support of the District's General Fund educational maintenance and operation expenses:

Levy Year	Collection Year	Approximate Levy Rate/\$1,000 Assessed Value	Levy Amount
2014	2015	\$4.416	\$1,238,320
2015	2016	\$4.452	\$1,250,767
2016	2017	\$4.536	\$1,276,608
2017	2018	\$4.583	\$1,292,103

all as provided in Resolution 334-12-13. Should this proposition be approved?

(Vote for ONE ONLY)

Levy Yes

Levy No

End of Ballot

Sample Ballot 12000010100011

600000162155

Sample Ballot

1503031103

Instructions

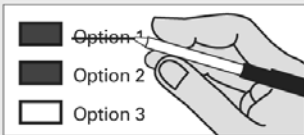
How to vote



Use a dark blue or black ink pen to completely fill in the box to the left of your choice.

Vote for one in each race. If you vote for more than one, no votes will be counted for that race.

If you make a mistake



Draw a line through the entire measure response or candidate's name.

Then you may make another choice.

i **Who donates to campaigns?**
View contributors for candidates and measures
Public Disclosure Commission
www.pdc.wa.gov
Toll Free (877) 601-2828

↓ Start voting here

Proposition No. 1 Shelter Bay Precinct 149 Skagit Transit Annexation

Shall the area comprised of the voter precinct of Shelter Bay (Precinct 149) be annexed to the Skagit Public Transit Benefit Area and thereby authorize a four-tenths of one percent (.004) sales tax for public transportation?

(Vote for ONE ONLY)

Yes

No

End of Ballot

Sample Ballot 12000010100011

700000722131

Sample Ballot

1523031145

2014 Special Election
Official Ballot
Skagit County, Washington
February 11, 2014

Precinct:
201

Page 1 / 2

Instructions

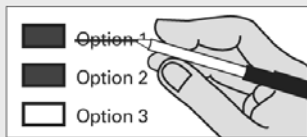
How to vote



Use a dark blue or black ink pen to completely fill in the box to the left of your choice.

Vote for one in each race. If you vote for more than one, no votes will be counted for that race.

If you make a mistake



Draw a line through the entire measure response or candidate's name.

Then you may make another choice.

Who donates to campaigns?
View contributors for candidates and measures

Public Disclosure Commission
www.pdc.wa.gov
Toll Free (877) 601-2828

↓ **Start voting here**

Prop. 1
Anacortes School Dist. #103
Replacement Educational Programs,
Maintenance & Operations Levy

The Board of Directors of Anacortes School District No. 103 adopted Resolution No. 795, concerning a proposition to finance educational programs, maintenance and operations. This proposition would authorize the District to meet the educational needs of its students by levying the following excess taxes, in place of an expiring levy, on all taxable property within the District, for support of the District's General Fund educational programs, maintenance and operations expenses:

Collection Year	Approximate Levy Rate/\$1,000 Assessed Value	Levy Amount
2015	\$1.52	\$7,520,000
2016	\$1.61	\$8,095,000
2017	\$1.61	\$8,215,000
2018	\$1.61	\$8,340,000

all as provided in Resolution No. 795. Should this proposition be approved?

(Vote for ONE ONLY)

- Levy Yes**
- Levy No**

Continue voting next page



Sample Ballot 12000900100037

Sample Ballot

1483031158

2014 Special Election
Official Ballot
Skagit County, Washington
February 11, 2014

Proposition 2
Anacortes School District No. 103
Levy for Instructional Technology
Improvements

The Board of Directors of Anacortes School District No. 103 adopted Resolution No. 796, concerning a proposition to finance instructional technology improvements. This proposition would authorize the District to increase student access to technology and enhance student learning by acquiring and installing instructional technology equipment and infrastructure, providing technical and instructional staffing and support, and levying the following excess taxes on all taxable property within the District:

Collection Year	Approximate Levy Rate/\$1,000 Assessed Value	Levy Amount
2015	\$0.32	\$1,588,000
2016	\$0.31	\$1,588,000
2017	\$0.31	\$1,588,000
2018	\$0.30	\$1,588,000

all as provided in Resolution No. 796. Should this proposition be approved?

(Vote for ONE ONLY)

- Levy Yes
- Levy No

End of Ballot

Sample Ballot 12000900200044

100063185214

Sample Ballot

1483031158

2014 Special Election
Official Ballot
Skagit County, Washington
February 11, 2014

Precinct:
301

Page 1 / 2

Instructions

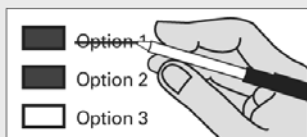
How to vote



Use a dark blue or black ink pen to completely fill in the box to the left of your choice.

Vote for one in each race. If you vote for more than one, no votes will be counted for that race.

If you make a mistake



Draw a line through the entire measure response or candidate's name.

Then you may make another choice.

Who donates to campaigns?
View contributors for candidates and measures

Public Disclosure Commission
www.pdc.wa.gov
Toll Free (877) 601-2828

↓ **Start voting here**

Prop. No. 1
Mount Vernon School Dist. No. 320
Replacement Educational Maintenance & Operations Levy

The Board of Directors adopted Resolution No. 03/13-14 concerning educational funding. This proposition authorizes the District to levy the following excess taxes, to replace an expiring levy, on all taxable property within the District, to support the District's educational maintenance and operations:

Collection Years	Approximate Levy Rate/\$1,000 Assessed Value	Levy Amount
2015	\$4.33	\$13,328,831
2016	\$4.54	\$14,128,561
2017	\$4.64	\$14,572,812

all as provided in District Resolution No. 03/13-14.
Should this proposition be approved?

(Vote for ONE ONLY)

Yes

No

Continue voting next page



Sample Ballot 12001020100095

200063186179

Sample Ballot

1483031158

2014 Special Election
Official Ballot
Skagit County, Washington
February 11, 2014

Proposition No. 2
Mount Vernon School District No. 320
Technology and Security Capital Projects
Levy

The Board of Directors of Mount Vernon School District No. 320 adopted Resolution No. 04/13-14 concerning a technology modernization levy. The proposition authorizes acquiring educational and operational technology, equipment and training, including classroom computers to support instruction; and authorizes the following excess levies for such purposes on all taxable property within the District:

Collection Years	Approximate Levy Rate/\$1,000 Assessed Value	Levy Amount
2015	\$0.67	\$2,061,440
2016	\$0.66	\$2,061,440
2017	\$0.66	\$2,061,440

all as provided in District Resolution No. 04/13-14.
Should this proposition be approved?

(Vote for ONE ONLY)

- Yes
- No

End of Ballot



Sample Ballot 12001020200005

200063186276



Sample Ballot

Sample Ballot

1483031158



2014 Special Election
Official Ballot
Skagit County, Washington
February 11, 2014

Instructions

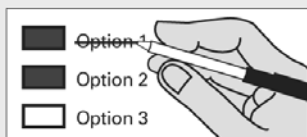
How to vote



Use a dark blue or black ink pen to completely fill in the box to the left of your choice.

Vote for one in each race. If you vote for more than one, no votes will be counted for that race.

If you make a mistake



Draw a line through the entire measure response or candidate's name.

Then you may make another choice.



Who donates to campaigns?

View contributors for candidates and measures

Public Disclosure Commission

www.pdc.wa.gov
Toll Free (877) 601-2828



Start voting here

Proposition #1

**Sedro-Woolley School District #101
Replacement Educational Programs &
Operations Levy**

The Board of Directors of Sedro-Woolley School District adopted Resolution No. 1012 concerning educational funding. This proposition authorizes the District to levy the following excess taxes to replace an expiring levy on all taxable property within the District to support the District's educational programs and operations:

Collection Years	Approximate Levy Rate/\$1,000 Assessed Value	Levy Amount
2015	\$4.24	\$ 9,900,000
2016	\$4.20	\$ 9,900,000
2017	\$4.29	\$ 10,200,000
2018	\$4.24	\$ 10,200,000

Should this proposition be approved?

(Vote for ONE ONLY)

Yes

No

Continue voting next page



Sample Ballot 12001260100017

300063187144

Sample Ballot

1483031158

2014 Special Election
Official Ballot
Skagit County, Washington
February 11, 2014

Proposition No. 2
Sedro-Woolley School District No. 101
Safety and Technology Capital Projects Levy

The Board of Directors of Sedro-Woolley School District adopted Resolution No. 1013 concerning technology levies. This proposition authorizes the acquisition and installation, implementation and management of computer technology and technology systems, facilities and projects, including but not limited to enhancing infrastructure, acquiring hardware, licensing software, and implementing online applications and training related to the installation of the foregoing as an integral part of the District's technology systems, facilities, or projects; and authorizes the following excess levies for such purposes on all taxable property within the District:

Collection Years	Approximate Levy Rate/\$1,000 Assessed Value	Levy Amount
2015	\$0.39	\$900,000
2016	\$0.38	\$900,000
2017	\$0.38	\$900,000
2018	\$0.37	\$900,000

Should this proposition be approved?

(Vote for ONE ONLY)

Yes

No

End of Ballot

Sample Ballot 12001260200024

300063187241

Sample Ballot

1483031158

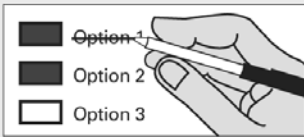
Instructions

How to vote



Use a dark blue or black ink pen to completely fill in the box to the left of your choice.
Vote for one in each race. If you vote for more than one, no votes will be counted for that race.

If you make a mistake



Draw a line through the entire measure response or candidate's name.
Then you may make another choice.



Who donates to campaigns?
View contributors for candidates and measures

Public Disclosure Commission
www.pdc.wa.gov
Toll Free (877) 601-2828



Start voting here

Proposition #1

**Burlington-Edison School District #100
Replacement Technology Capital Projects
Levy**

The Board of Directors of Burlington-Edison School District adopted Resolution No. 811 concerning a technology modernization levy. The proposition authorizes replacing an expiring levy, acquiring educational and operational technology, equipment and training, including classroom computers to support instruction; and authorizes the following excess levies for such purposes on all taxable property within the District:

Collection Years	Approximate Levy Rate/\$1,000 Assessed Value	Levy Amount
2015	\$0.147	\$400,000
2016	\$0.146	\$400,000

all as provided in District Resolution No. 811. Should this proposition be approved?

(Vote for ONE ONLY)

Yes

No

End of Ballot

Sample Ballot 12001330100067

400063188109

Sample Ballot

1483031158