

# On-site Sewage Management Plan

## Designated Marine Recovery Areas

### Samish Watershed

Four of the Marine Recovery Areas and one Sensitive Area were designated in 2007. Even so, commercial shellfish harvesting in Samish Bay continues to struggle. Four thousand acres of the Samish Bay commercial shellfish growing area was downgraded from approved to conditionally approved based on rain events in 2011. Though water quality monitoring data from Skagit County Public Works has shown improvement, it is still not enough to meet State water quality standards. Designating the remainder of the Samish Watershed an MRA will help to bring the entire watershed up to State water quality standards.

The boundaries include only areas where there are likely to be on-site sewage systems. It includes the 2007 - 2008 designated MRAs as sub-basins, including Samish Island, Colony Creek, Upper Samish and Lower Samish. The Thomas Creek Sensitive Area is absorbed into the new Upper NE Samish sub-basin MRA. The Willard Creek sub-basin MRA is also included in the Samish Watershed MRA.

Figure 1 depicts the area added to the existing MRA's and sensitive area to define the Samish Watershed Marine Recovery Area. Figure 2 depicts the boundaries of the Samish Watershed MRA. *MRA Designation – yellow or threatened (water quality trends show improvement . . . are still below standard, and/or O/M data inspection rate is below 80%)*

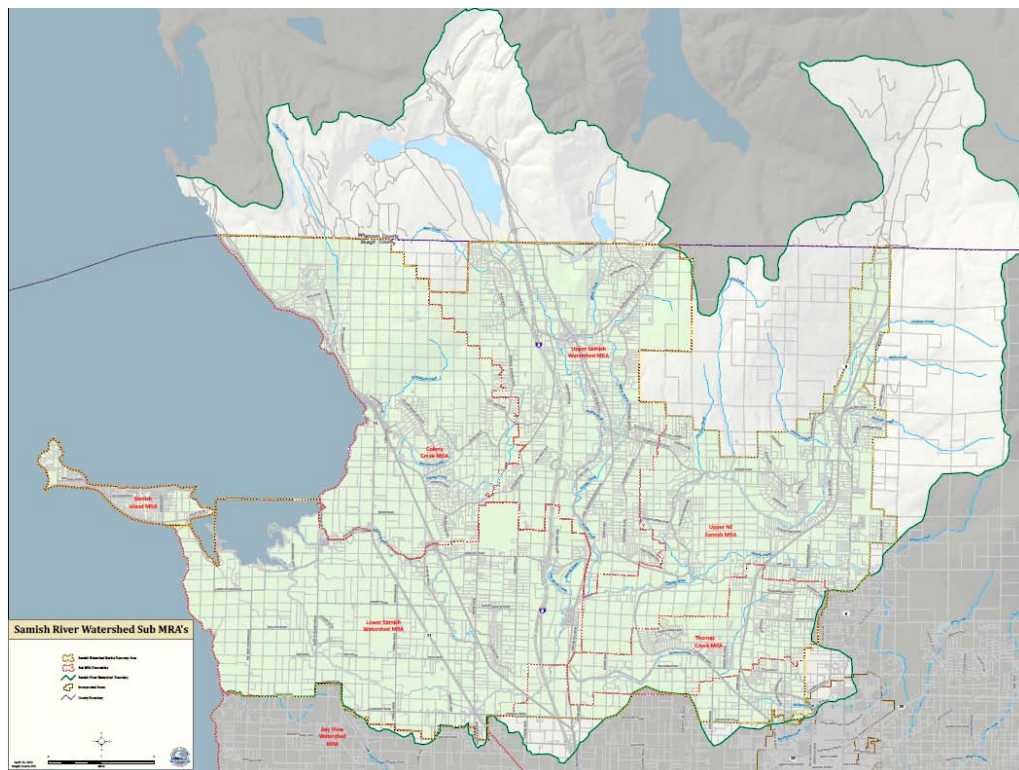


Figure 1 - Samish Sub-basin MRA

# On-site Sewage Management Plan

Map of Samish Watershed MRA Boundaries Inserted Here  
**Figure 2 - Samish Watershed Marine Recovery Area**

# On-site Sewage Management Plan

## Similk Beach community

Similk Bay shellfish commercial shellfish acreage was upgraded to approved November 22, 2010. All on-site sewage systems in Similk Beach have been identified, inspected and repaired as needed. To maintain this success, Similk Beach will remain a Marine Recovery Area. *MRA – green or Complete (water quality meets standards and requires ongoing monitoring, and O&M data indicates inspections at 80% or greater)*

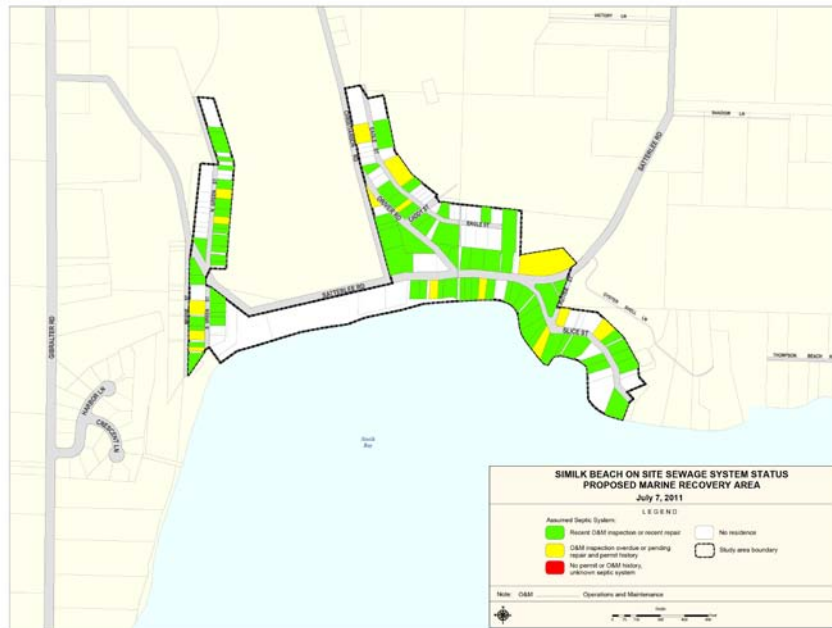
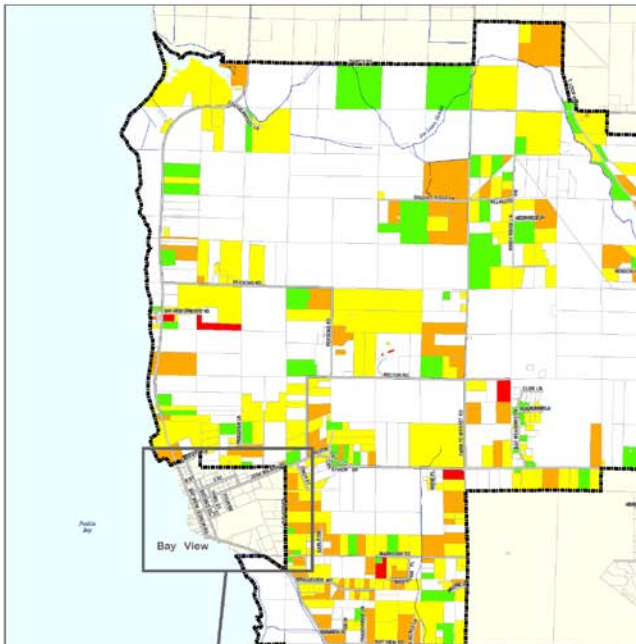


Figure 3 Similk Beach O&M status July 7, 2011

## On-site Sewage Management Plan Bay View

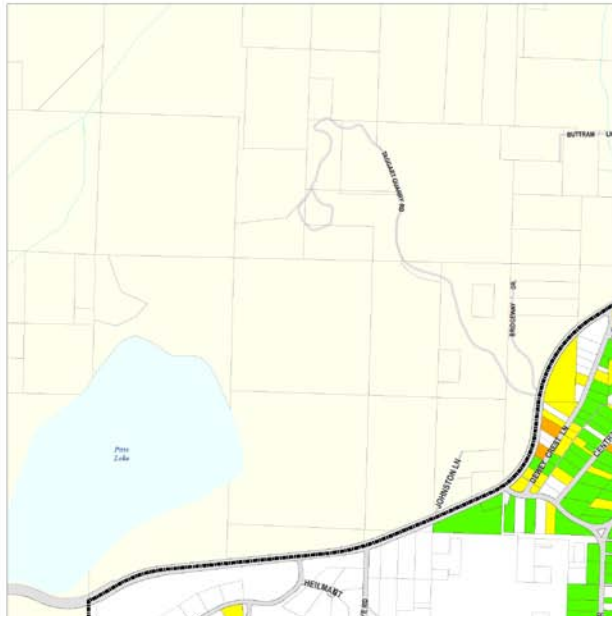
The Padilla Bay and Bay View rural village Marine Recovery Area previously designated can simply be termed Bayview MRA. All on-site sewage systems in the existing Bayview Marine Recovery Area were identified in 2010 – 2011. Less than 80% of those, however, are up-to-date with their inspections. *MRA Designation – yellow or threatened.*



**Figure 4 Bay View O&M status June 6, 2011**

## On-site Sewage Management Plan Yokeko Point, Dewey Beach, Quiet Cove Communities

All straight pipes sending sewage to Deception Pass and Similk Bay have been eliminated, and all on-site sewage systems inspected and repaired as needed. *MRA Status – green or complete.*



**Figure 5 Yokeko, Dewey Beach, Quiet Cove O&M status July 7, 2011**

# On-site Sewage Management Plan

**Guemes Island** This island is designated a sole source aquifer, thus requires the designation as a Marine Recovery Area. All on-site sewage systems have been identified, however, it remains in threatened status because inspection rates are currently below 80%. *MRA designation – yellow or threatened.*

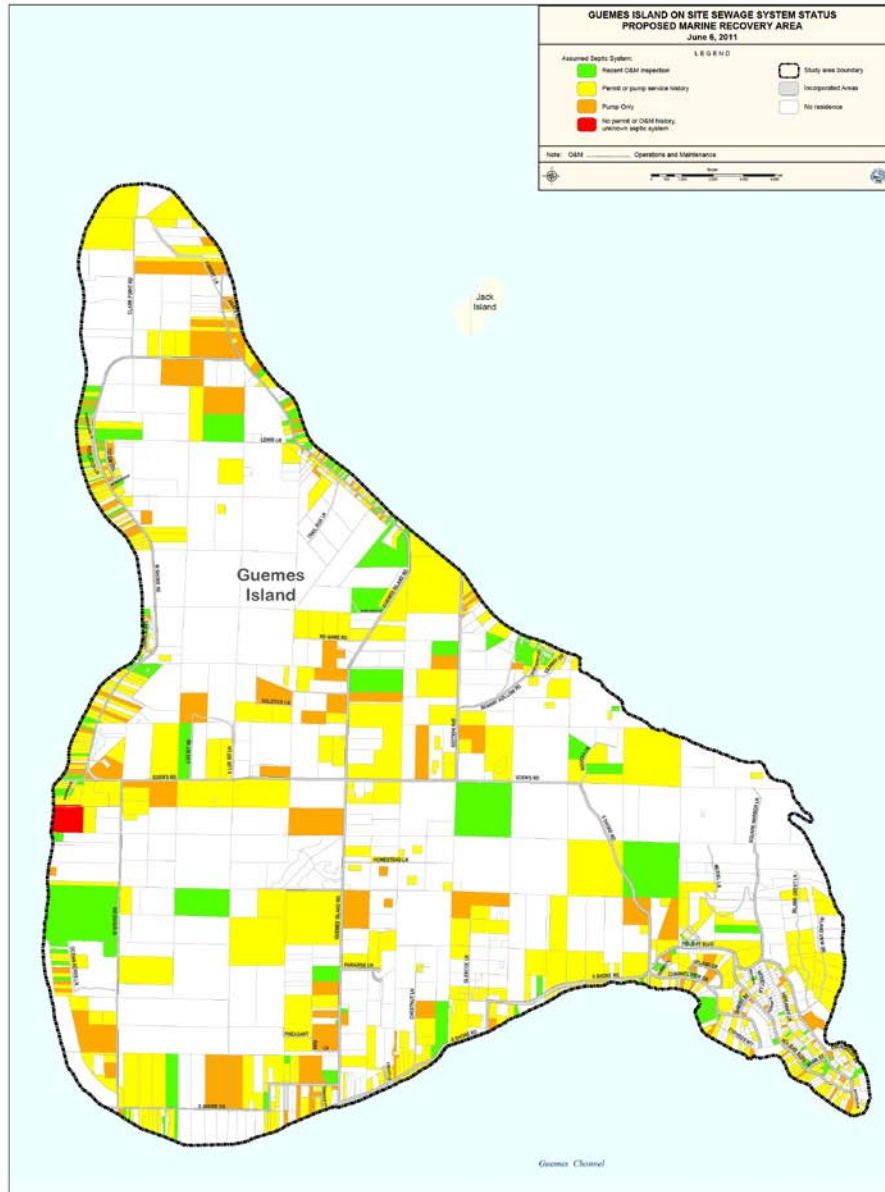


Figure 6 Guemes Island O&M status

# On-site Sewage Management Plan

## Nookachamps Creek Watershed

All on-site sewage systems in the Nookachamps watershed have been identified. Inspection status is currently below 80%. *MRA status – yellow or threatened.*

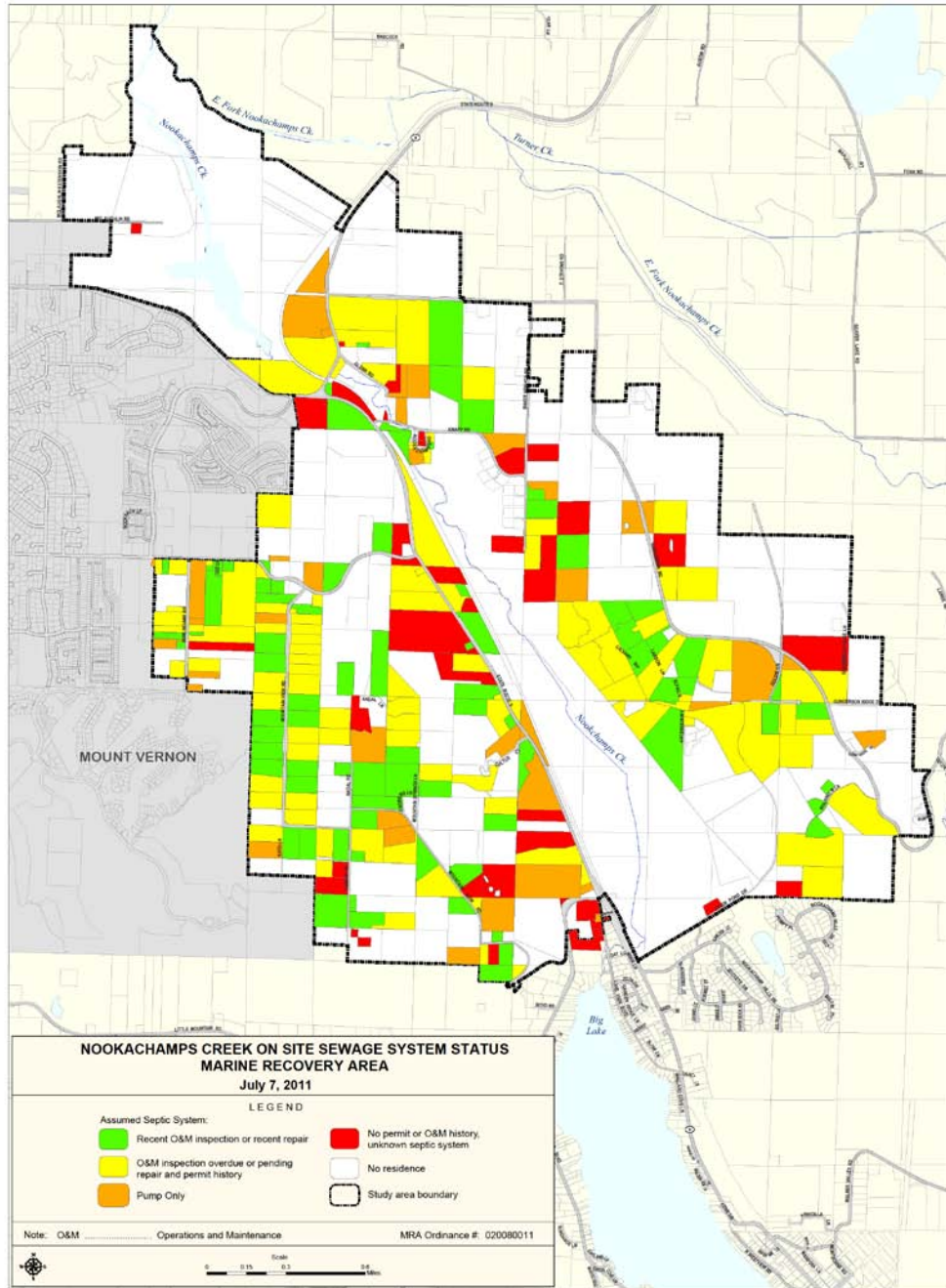


Figure 7 Nookachamps Watershed O&M status

# On-site Sewage Management Plan

This area intentionally blank

## ***C. Coordination with planning entities within the jurisdiction.***

### **Planning Agencies in Skagit County**

Skagit County Public Health is the health agency for all planning agencies, cities and County, in Skagit County.

Currently the Skagit County Public Health Department coordinates with the Skagit County Planning and Development Services (PDS) office in two ways: administratively and employee sharing. The Environmental Health Supervisor meets quarterly with the PDS Director and key staff. In addition the Health Department has two employees located in the PDS office to review water and on site sewage permits and co-ordinate the permit process with Health Department rules and regulations. When a land-use or development application is received by PDS, the application is routed to the Health Division of PDS if there are either drinking water or on-site sewage issues to be addressed.

The Health Department also has a hydrogeologist as a shared position in Public Works. If a development application shows on-site sewage systems may have an impact on an Aquifer Recharge Area, the County Hydrogeologist is consulted.